

NEW!



New! KTS 340:

Easy to operate. Hard to beat



BOSCH

Invented for life

Bosch Diagnostics

ES[tronic]
Software

Test
Equipment

Service
Training

Technical
Hotline

KTS 340 from Bosch: All-in-one solution for diagnostics, troubleshooting, repair, maintenance



KTS 340: Compact, complete, mobile – the new diagnostics tester from Bosch

Increased level of networking

The number of electronics systems in a vehicle is increasing rapidly. Increasingly, they are networked to safety, comfort and convenience systems. Driving forces behind this development are not only customer desires for increased comfort, but also safety regulations and statutory emission standards. In the face of this challenge, pure ECU diagnostics is no longer sufficient. Further information provided by efficient test equipment is also necessary.

A tester for all purposes

Many workshops want a multifunctional tester. The KTS 340 fulfills this desire. All "tools" necessary for troubleshooting are available in the tester. It is ideally suitable for independent workshops and fast fitters, or as a secondary device for mobile use.

Rapid diagnostics and simple repairs

- ▶ Everything for complete vehicle diagnostics: For ECU diagnostics, troubleshooting, repair and maintenance
- ▶ New intuitive operating concept covering all information
- ▶ Fast and easy to operate via the touchscreen – with a standardized screen concept
- ▶ Can be switched over immediately: From ECU diagnostics to troubleshooting (component repair) and vice versa
- ▶ Ideal in service – speeds up the work steps that make money for the workshop
- ▶ Easy to handle, mobile everywhere in the workshop and can be used in or on the vehicle
- ▶ Can perform all workshop tasks: Integrated measuring technology and integrated WLAN
- ▶ Handy and portable with a large range of functions
- ▶ Mobile power supply through commercially available batteries
- ▶ Future-proof: Integrated OBD adapter

Mobile vehicle diagnostics:

Easy to operate with ESI[tronic]



Good management of vehicle information

Higher-order information, such as details on the vehicle, which systems are installed, or where the diagnostics socket is located in the vehicle



Use of ECU diagnostics

Direct access to the ECU diagnostics: Tester functions "Read fault memory", "Delete fault memory", actual values, setpoint values and actuator test



All functions quickly under control

SIS/CAS[plus] offers vehicle- and system-specific information on the selected vehicle system



Maintenance

Here you will find a clearly arranged and systematic presentation of all information required for maintenance



TSB Technical Service Information

As an ideal supplement to SIS instructions, TSB opens up rapid access to well-known vehicle faults and offers assignment according to symptom and system group (ABS, airbag, engine, etc.).



Precise measuring technology for fast results

Comprehensive multimeter capabilities for resistance measurement, diode measurement, voltage measurement and current measurement

Professional tester with complete program: Effective support for the workshop



KTS 340: Easy to handle and robust in daily workshop operation

All information integrated and available

In daily practice, it is essential to have quick and simple access to all information necessary for the current job. This market requirement is met perfectly by the KTS 340: Through merging ECU diagnostics, troubleshooting repair and maintenance.

Ready to cope with the trends in vehicle electronics

The main reasons for the increase in electronic systems in the vehicle are higher requirements for safety, comfort and pollutant reduction on the part of customers and legislators. Car manufacturers create an appropriate brand image to increase new-car turnover. Workshops with a command of innovative systems open up new chances in service.

ESI[tronic] software makes it easy

The KTS 340 can be operated easily thanks to the clearly arranged and structured software. This starts with the standardized, optimized vehicle identification.

The workshop easily manages all types of information for fault-finding: Whether from the system overview direct to diagnostics and troubleshooting, from troubleshooting and the maintenance schedule direct to diagnostics, or from diagnostics direct to component repair.

Information and measuring technology:

Everything is possible

Complete equipment for daily workshop operation: The new KTS 340 provides all necessary information and the measuring technology for ECU diagnostics, guided troubleshooting, repair, maintenance and service.

Workshop-compatible for modern systems

The tester is tailored to repairs with ECU diagnostics software, fault-finding instructions, maintenance information and integrated multimeters. And everything is guided by new, practical menu navigation tuned to work sequences in the workshop.

Modern test equipment:

Robust, light and fast



Connections: USB for PC and printer, card slot and mains operation

Mobile power supply and mains connection

Can be used everywhere for around two hours with an alternative supply from two internal commercially available batteries (AA cells NiMH). Supply also during diagnostics via the OBD cable. Mains connection: Port jack for power supply unit and charging contacts for supply via charging tray.



For fast measurements: Multimeter

Multimeter function: Ideal in the test procedure

Connections in channel 1: Socket yellow (+) and blue (-), channel 2: Socket red (+) and black (ground). CAS[plus] also makes the multimeter function available directly on the troubleshooting interface: Resistance, current and voltage values with automatic target-actual comparison. The measured values can also be displayed as curves.



WLAN: Always connected

Wireless and mobile

Further information, e.g. from the workshop archive, can be linked via WLAN and protocols can be printed out wirelessly at a PC.



The adapter is located on the rear side of the housing

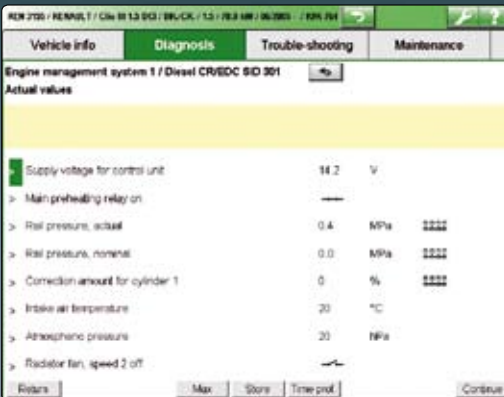
Adapter: Equipped for the future

The current adapter is integrated in the housing. Fast updating is possible at any time following changes to vehicle interfaces. The OBD adapter is the same as with the radio modules of the KTS 5 series.

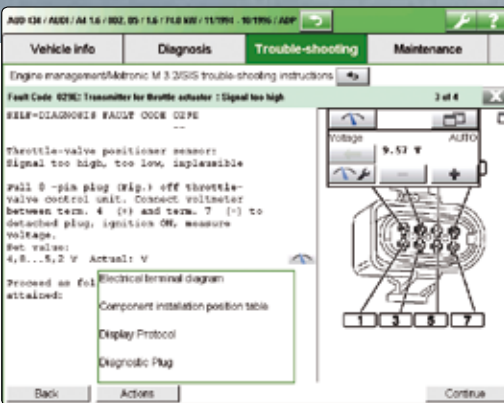
Achieve your goal faster: ECU diagnostics SD and fault-finding instructions SIS



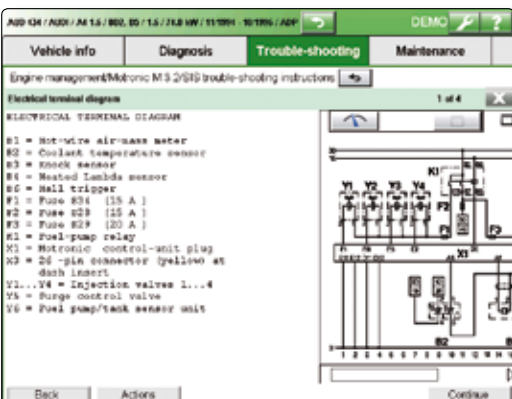
New flexibility: Can jump at any time from ECU diagnostics to troubleshooting or component repair



Clearly arranged information presentation: Up to 8 actual values can be displayed at the same time



„Networked“ troubleshooting: Fault-finding instructions with detailed fault description can be called up



All important information readily available: e.g. circuit diagrams



Selection of the possibly defective vehicle system

New! ECU diagnostics: More than simply fault codes

After "Read out fault memory", the software already links the fault codes to the fault-finding instructions (component repair).

Troubleshooting made easy

SIS fault-finding instructions show the way to successful repair. Further information is also available, such as hydraulic, pneumatic and electric connection diagrams.

CAS[plus] links the fault-finding instructions to diagnostics

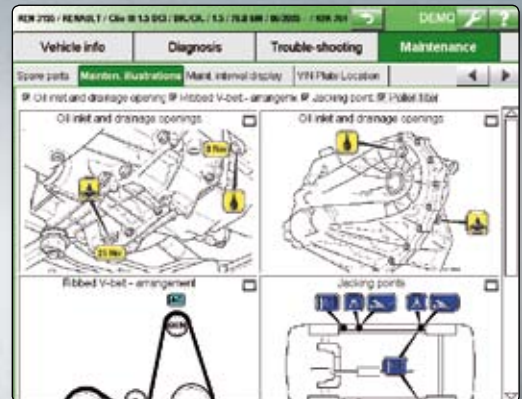
ESI[tronic] with CAS[plus] guides the mechanic through all test steps and always provides the information and diagnostics functions necessary for repair. Actual values supplied by the diagnostics are compared with the setpoint values from the instructions.

When, what and where: Vehicle information and maintenance **M**



Vehicle info	Diagnosis	Trouble-shooting	Maintenance
Vehicle details: Equipment systems Diagnostics socket			
System	Description	Version	Manufacturer
Engine	CR/EDC	SD001	-
Engine management	CR/EDC	SD001	-
Bodywork			
Arbog	AB	8.0	BOSCH
Body service	Manual interval read	-	-
Central electronics	Engine compartment central electronics	3.1	-
Central electronics	Pass. compartment central electronics	3.1	-
Central electronics	Pass. compartment central electronics	3.1.1	-
Heater/air conditioner	Automatic A/C	3.1	-
Instrumentation	Instrument cluster	3.1	-
Lighting	ALWIR and coming light	1.0	-
Parking aid	Park Distance Control (PDC)	1.0	-
Suspension			
Anti-lock braking system	ABS	8.0	BOSCH
Power windows	Electric window system	-	-

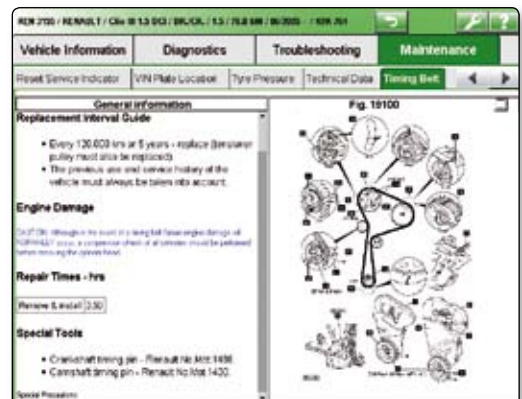
Vehicle information: All higher-order information on the vehicle: Details, systems and diagnostics socket



Maintenance illustrations: All information at a glance

Vehicle info	Diagnosis	Trouble-shooting	Maintenance
Technical data: Timing belt, Wheel alignment, Key programming			
Category	Complete data		
Vehicle identification	Complete data		
ACM No.	Vehicle identification		
Model	Injection systems		
Model combi	Tuning and emissions		
Year	Starting and charging		
Engine	Raw clips		
Vol. of cylinder	Service checks and adjustments		
Capacity	Lubricants and capacities		
Output	Tightening torques		
Compression	Engine disc and drum dimensions		
Fuel system	Air conditioning		
Injection syst.			
Air metering			
Fuel injection pump assembly			
Pump type			
Injection sequence			
Injector nozzle			

Comparable at all times: All test values can be displayed at the interface



All information on toothed belt change

Vehicle information: All important information quickly available

All higher-order information on the vehicle, such as details, installed systems and the position of the diagnostics socket

New: The simple switch from the equipment system directly to diagnostics and troubleshooting.

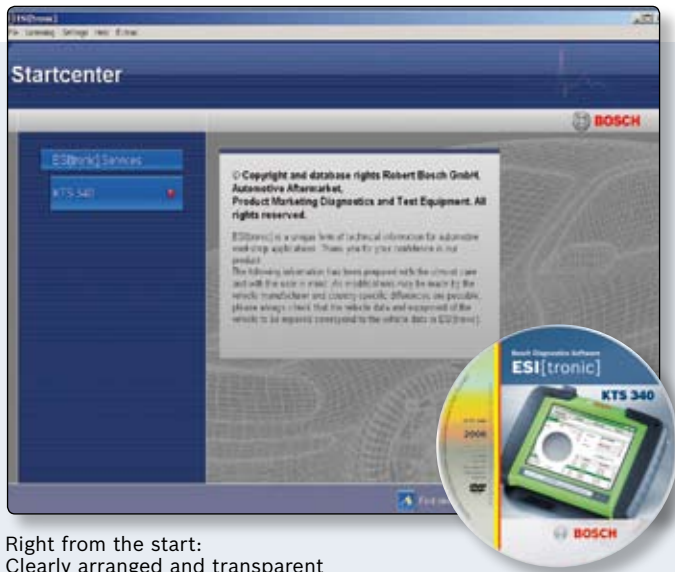
Maintenance: Well organized according to a schedule

The central starting point for maintenance is the maintenance schedule, which also permits direct access to diagnostics and test values. All information necessary for performing maintenance is available, e.g. maintenance illustrations, toothed belt information, tire pressures, etc.

TSB Technical Service Information

As an ideal supplement to the SIS instructions, TSB permits rapid access to well-known vehicle faults. This is combined with a clear description of causes, supplemented by tested repair tips with visual support.

KTS 340: Ready, steady, go!



Right from the start:
Clearly arranged and transparent



Workshop-compatible: Complete with a sturdy case

Start-up in the Start Center:

Simple licensing procedure, convenient printing and the selection of the ESI[tronic] Trainer are the functions clearly arranged and available in the Start Center. Updating the information for the software is also carried out here. The updates are first saved to the PC and then transferred to the KTS 340.

Equipment supply*

Power supply unit (15 V/4 A), mains connection cable, OBD adapter, OBD diagnostics cable 3 m, Uni 4 adapter, measurement cable red, measurement cable blue, measurement cable yellow, measurement cable black, test point red, terminal black, USB connecting cable 1 m, touchpen, case.

* KTS 340 can only be operated in conjunction with the ESI[tronic] licensing agreement

Order number: 0 684 400 340

Comparison between KTS 340 and KTS 670

Hardware comparison	KTS340	KTS670
Weight	approx. 2 kg	approx. 4.5 kg
Display	8.4" color TFT touchscreen	12.1" color TFT touchscreen
Multimeter	2-channel	2-channel
Oscilloscope	...	2-channel
VGA connection	...	✓
DVD drive	...	✓
Upgradable to FSA/BEA	...	✓
Printer port	via PC	✓
Integration into company networks	...	✓
Platform for external applications	...	✓
Operating system	Linux embedded	Windows XP embedded

Software comparison (area of application)	KTS340	KTS670
Catalog and parts information	...	✓
Order handling and calculation	...	✓
Diagnostics and repair at the vehicle	✓ (without convenience circuit diagrams)	✓
Diagnostics and repair at the product	...	✓

Data and facts



Full service: Comprehensive basic equipment supplied



Energy supply guaranteed: The new variable charging tray

Technical data	KTS340
Board	operating system Linux, 8 GB SD Card
Display	8.4" TFT color display with touchscreen
Resolution SVGA	800 x 600 dpi
Equipment	Loudspeaker and WLAN integrated
Status indicator	Via 2 LEDs: On/Off, mains operation, battery charge status
Operation	Touchscreen, 1 membrane key (On/Off)
Battery	Service life depending on charge status and application approx. 1 to 2 hours, 8 x AA cells, commercially available
Housing	Stable plastic housing, integrated impact protection
Dimensions	290 x 67 x 214 mm (W x D x H)
Operating temperature	0 to 40 °C
Weight	approx. 2 kg
Diagnostics protocols	ISO 9141-2, K/L lines, flashing code, SAE-J1850 VPW (GM, ...), corresponds to ISO 11 519-4 SAE-J1850 PWM (Ford), corresponds to ISO 11 519-4 CAN ISO 11898 ISO 15765-4 (OBD) Highspeed, Middlespeed, Lowspeed and Singlewire CAN

Special accessories	Order number
Tire valve activator	1 687 200 663
**) Printer PDR 371	1 687 023 435
USB connecting line 1.0 m	1 684 465 491
Touchpen	1 683 083 007
Charging tray	1 687 023 477
OBD adapter box with OBD connector	1 688 462 514
Level adaptation 12 V/5 V	1 688 463 495
Test cable set	1 687 011 208
OBD diagnostics cable 1.5 m	1 684 465 555
OBD diagnostics cable 5 m	1 684 465 567
FSA current clamp 30 A	1 687 224 969
FSA current clamp 1000 A	1 687 224 968
Adapter for FSA current clamp of FSA 450 (adapter 1 684 480 125 also required)	1 684 463 522
Test shunt 0 to 600 mA	1 684 503 103
AC/DC trigger clamp 100/600 A with banana connector	1 687 224 864

Special accessories	Order number
*) Test adapter Mercedes-Benz 38-pin	1 688 485 382
*) Adapter cable Ford	1 684 463 440
*) Adapter cable Ford EEC4	1 684 463 496
*) Adapter cable Ford (adaptation PSG-5 pump unit via CAN)	1 684 463 652
*) Adapter cable MAN 37-pin (EDC, MS 5)	1 684 463 498
*) Adapter cable MAN 12-pin (EDC, MS 6.1, MS 6.4, CR, EDC7C)	1 684 463 499
*) Adapter cable Mercedes-Benz	1 684 447 032
*) Adapter cable Mercedes-Benz (Sprinter, Atego)	1 684 463 494
*) Adapter cable Opel Multec	1 684 463 410
*) Adapter cable Opel Vauxhall	1 684 463 464
*) Adapter cable PSA (+/- clip)	1 684 460 182
*) Adapter cable PSA 3-pin for e.g. ABS (requirement is 1 684 463 399)	1 684 463 400
*) Adapter cable Rover	1 684 463 439
*) Adapter cable Scania 16-pin (R 124, R144)	1 684 463 49
*) Adapter cable for power supply connection to cigarette lighter	1 684 460 202

*) Only in conjunction with adapter cable Uni 4 (1 984 463 539) **) Order USB connecting cable

Special accessories Easy Connect adapter



BMW 20-pin,
1 684 463 631



Daewoo / GM / Holden 12-pin
1 684 463 632



Fiat Group 3-pin
1 684 463 613



Honda 3- and 5-pin *
1 684 463 634



Hyundai/Mitsubishi 12-pin
1 684 463 638



Mazda 25-pin*
1 684 463 637



KIA 20-pin
1 684 463 636



Nissan 14-pin
1 684 463 639



Peugeot 30-pin (PSA 30)
1 684 465 583



Renault comm. veh. 12-pin*
1 684 465 581



Renault pass. car 12-pin*
1 684 465 582



Toyota without Pin 1 & 9
1 684 463 686



Toyota 17-pin
1 684 463 642



Toyota 23-pin*
1 684 463 643



VW / Audi
1 684 463 611



Connection to the vehicle depends on the diagnostics socket

Connection possibilities are the OBD diagnostics cable or OBD diagnostics cable plus "Easy Connect" or the OBD diagnostics cable plus Uni 4 adapter with vehicle-specific cable.

Convincing advantages for the workshop

- ▶ Only one direct connection cable
- ▶ Automatic recognition of the vehicle-specific connections
- ▶ Simple, fast adaptation at the vehicle with no risk of incorrect connections
- ▶ Check of connection and matching connection cable
- ▶ Fewer plug connections
- ▶ Simplified and intelligent multiplexer control
- ▶ Software-controlled communication pin selection

Our **knowledge**, your **success**

Bosch Diagnostics

Diagnostics – the key to the automotive workshop of the future

Motor vehicle systems are becoming increasingly complex; the demands placed on qualified diagnosis in workshops are rising. For professional service on modern vehicles, Bosch provides everything at one stop, perfectly coordinated: test equipment, software, technical training and hot-line, supplemented by parts in initial equipment quality.



ESI[tronic] – software for diagnostics and service

- ▶ Simple operation
- ▶ Rapid access
- ▶ Modular structure
- ▶ Comprehensive market coverage
- ▶ Continually updated
- ▶ Universal operation regardless of manufacturer



Test equipment – matched to each workshop type

- ▶ Optimized combination of hardware and software for rapid troubleshooting, qualified repair and high time savings
- ▶ PC-based, test equipment of the latest generation with extendable modules



Service training: Knowledge as a factor of success

- ▶ Comprehensive training program for automotive workshops
- ▶ Practical training courses
- ▶ Highly qualified trainers with a great deal of practical experience



Technical hotline: Support from the system developer

- ▶ Support in difficult technical situations
- ▶ Skills covering all brands and manufacturers

Bosch: **Skilled partner** for workshop business

Developments from Bosch stand for innovative progress in automobile manufacturing

Geared to the growing proportion of electronics in the vehicle, Bosch offers workshops the suitable test equipment for all sizes of company and service concepts. Sturdy, innovative, state-of-the-art automobile technology: Computer-assisted diagnosis systems help in finding any fault more quickly and more reliably. The modular layout using future-oriented technologies enables broad networking and efficient use of comprehensive information from the ESI[tronic] software. Mobility and user-friendly user guidance support the workshop in reliable and time-saving diagnostics.



Where to find Original Bosch Quality:

Robert Bosch GmbH
Automotive Aftermarket
Business Unit Diagnostics
D-73201 Plochingen

www.bosch-diagnostics.com



ECU Diagnostics KTS



Engine System Testing FSA



Emission Analysis BEA



Diesel System Testing EPS



Battery Service BAT



Air Conditioning Service ACS



Wheel Alignment FWA



Tire Service TSE



Brake Testing BSA



BOSCH

Invented for life